

Asheville Civil Air Patrol

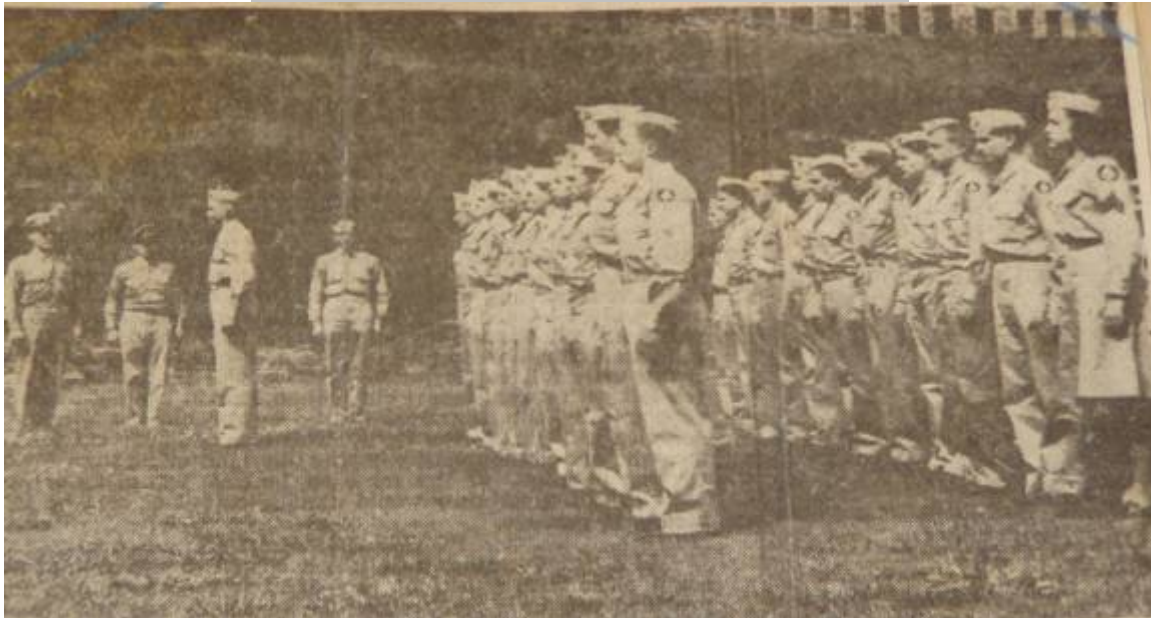
<http://www.ashevillecap.org/history.php>

OUR HISTORY

Volunteers Serving America in Times of Need

The Civil Air Patrol wasn't just serving on the coast and southern border. The CAP has been serving in the mountains of WNC too. The Squadron was activated sometime in 1942, as the Western North Carolina Squadron of the Civil Air Patrol.

Asheville Citizen Times - May 21 1944.



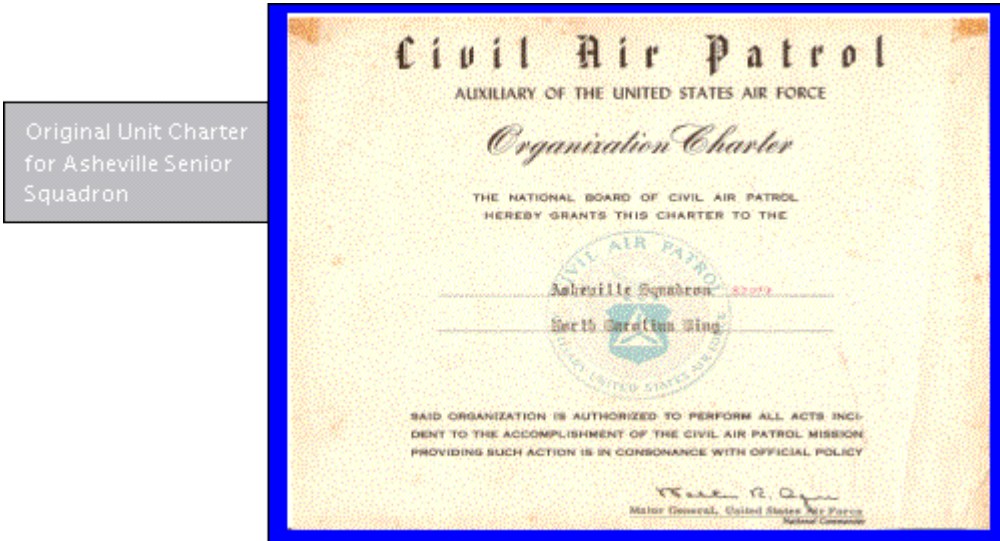
In 1943 the Western North Carolina Squadron started training cadets for the Cadet Program, which had been authorized in October of 1942. During this time the squadron operated from the Asheville-Hendersonville Airport in the Cane Creek community. Pilots from the Western North Carolina Squadron flew various missions in that time from Missing Aircraft Search to Forest Patrol, and other missions as required by the war effort.

In 1945 the CAP helped sponsor and fund, an Aeronautics Program at Lee Edwards High School in Asheville, qualified students were encouraged to join the CAP as cadets.

February of 1945 the squadron was activated as the Asheville Squadron, under the command of 1 Lt Edward L. Clasz.

CAP National HQ created Unit Charters during 1956, on May 22, 1957 National Headquarters formally chartered Asheville Senior Squadron. Some time before 1977 the squadron was re-chartered as a composite squadron.

Over time the squadron has grown to become the largest in the North Carolina Wing of the Civil Air Patrol.



Original Unit Charter for Asheville Senior Squadron

Asheville Hendersonville Airport around 1943-44



The Squadron has flown a number of different aircraft in that time, from Waco's and Piper Cubs to a USAAC Surplus PT – 17, and now our current aircraft a Cessna 182.

Other squadrons have come and gone over time, Asheville Composite Squadron, as we are now known, and Swain County Flight are the only active CAP units in WNC. We have met in a number of places from the Asheville-Hendersonville Airport in Cane Creek, and David Millard Junior High School in the 1940's, to Josephson Airport in the Emma community in the 1950's,

Asheville City Hall in the 1960's, to the Naval Reserve Center in the 1970's and 80's to T. C, Robertson HS and, our current home at the Asheville Regional Airport.

Today's Cadets in formation at our current home



Though the people and missions may change the spirit, and commitment to serve remains the same today, as it was when the CAP started in 1941.

Then as now, we are "The Eyes of The Home Skies".... *Semper Vigilans* Always Vigilant.